



FACT SHEET

DELAWARE

Based on numbers available 01/01/18)

MEMBERSHIP

GRAND TOTAL: 7,648

• **Members: 7,449**

General Members: 6,574
Greenwings: 640
Legacy Greenwing Members: 25
Sponsor Members: 190

• **Major Sponsors: 199**

Life Sponsor: 123
Diamond Life: 29
Sponsor in Perpetuity: 17
Diamond in Sponsor in Perpetuity: 8
Heritage Sponsor: 9
Diamond Heritage: 4
Benefactor Roll of Honor: 5
Gold Benefactor Sponsor: 1
Diamond Benefactor Sponsor: 0
Legacy Sponsor: 0
Gold Legacy Sponsor: 2
Platinum Legacy Sponsor: 0
Diamond Legacy Sponsor: 1
Conservation Pioneer Sponsor: 0
Waterfowl Patron Sponsor: 0
Wetland Guardian Sponsor: 0

FEATHER SOCIETY MEMBERS: 28

- Silver: 26
- Gold: 1
- Emerald: 0
- Platinum: 1
- Diamond: 0
- Legacy Conservation Pioneer: 0
- Legacy Waterfowl Patron: 0
- Legacy Wetlands Guardian: 0

U.S. CONSERVATION PROGRAMS

- Total acres conserved in flyway: 632,243
- Total acres conserved in this state: 17,809
- Amount spent to date on projects in flyway: \$181,647,057
- Amount spent to date on projects in state: \$4,132,652
- Primary waterfowl species that benefit from DU's efforts include:
Wood Duck; Mallard; Black Duck; Canada and Lesser Snow
Goose; Scaup; Gadwall; Redhead; Ring-Necked Duck;
Goldeneye; Bufflehead and Ruddy Duck.

STATE FUND-RAISING EFFORTS

- Total event income dollars raised: \$876,787
- Number of committees: 13
- Number of fund-raising events: 41
- Local chapter volunteers: 623

OUR STATE GOVERNMENT'S CONTRIBUTION TO DU FOR CANADIAN PROJECTS

- Total contributions granted: \$1,468,741
- Location of projects: New Brunswick, Newfoundland, Nova Scotia, Prince Edward Island, Maritimes

DELAWARE STATE CHAIRMAN

James E. Vachris, Jr., State Chairman
100 Country Club Drive
Wilmington, DE 19803
H (302) 427-2726 B (302) 652-3621 C (302) 521-7120
jvduckhunter@gmail.com

FOR INFORMATION ON DUCKS UNLIMITED EVENTS

CONTACT:

Ben Vaughn, Regional Director
371 Lake Drive
Smyrna, DE 19977
(302) 535-6741
bvaughn@ducks.org

Joe Rowan, Director Fundraising & Volunteer Relations- Region 6
B (410) 758-3145 C (410) 924-1047
jrowan@ducks.org

FOR INFORMATION ON BECOMING A MAJOR SPONSOR

CONTACT:

Chip Heaps, Senior Director of Development
(410) 399-4093
cheaps@ducks.org

Chad Manlove, Managing Director of Development
(601) 206-5442
cmanlove@ducks.org

FOR INFORMATION ON DU'S GIFT PLANNING PROGRAM

CONTACT:

Sarah McCallum, Director of Gift Planning
(734) 623-2031
smccallum@ducks.org

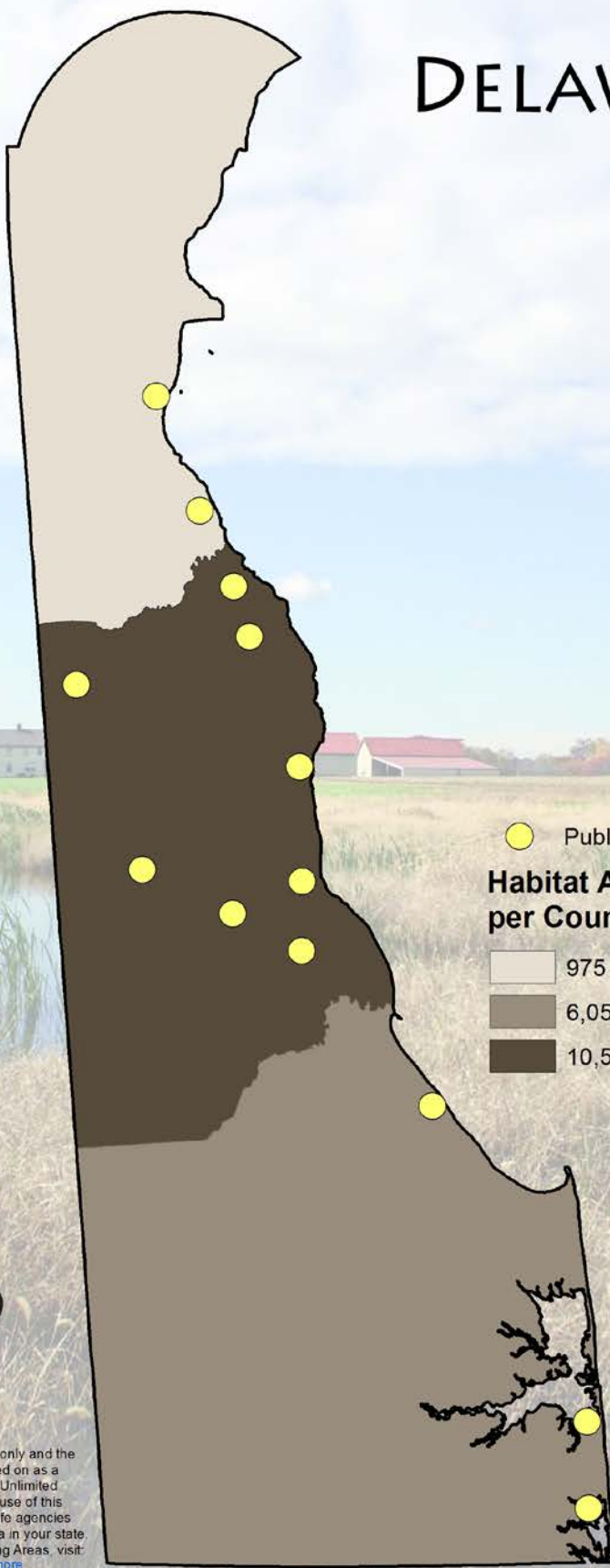
FOR INFORMATION ON DU'S CONSERVATION PROGRAMS


CONTACT:

Jacob McPherson, Regional Biologist - Annapolis
(410) 643-7635
jmcperson@ducks.org


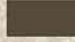


DELAWARE



 Public Land Projects

Habitat Acres Conserved per County

-  975
-  6,057
-  10,565



This illustration is intended for informational purposes only and the features depicted herein are not intended to be relied on as a survey, directional map, or legal instrument. Ducks Unlimited disclaims any liability associated with the use or misuse of this information. Please consult state and/or federal wildlife agencies for hunting regulations specific to any public hunting area in your state. For more information on National Wildlife Refuge Hunting Areas, visit: <http://www.ducks.org/hunting/nwr?poa=huntmore>
For more information on hunting regulations, visit: www.dnrec.delaware.gov